

19 inch Rack Cabinets

STANDARD 19 INCH CABINETS FOR ELECTRONIC
AND ELECTRICAL APPLICATIONS



Techmetal, through extensive research and development including customer feedback, have designed and produced a 19 inch rack cabinet and a range of accessories that it believes meets the existing and future needs of its customers.

The high-quality finish and superb appearance of our 19 inch rack cabinets will enhance any installation and are suitable for many industries such as tele-communication carriers, internet service providers, computer/IT companies, government, military and electronics companies.



Description

1 Standard Rack

The fully welded construction of the frame ensures that the rack will be stable under various load conditions. The mounting members have caged nut holes pre-punched along the RU height of the rack and provides the 19 inch mounting as specified by the standards. Four panel mounting members are supplied per rack.

2 Standard Plain Top (no fans). Vented option available

3 Top with 3 fans (Other fan options available)

4 Standard Side Panels (Non ventilated)

Flush grip handles are fitted to the side panels, allowing for easy pull and lift off access. Cable entry cutouts can be provided.

Options

Side panels can be ventilated with either louvres or perforations.

Lockable: For added security and limited access, keyed cam locks can be fitted to the side panels.

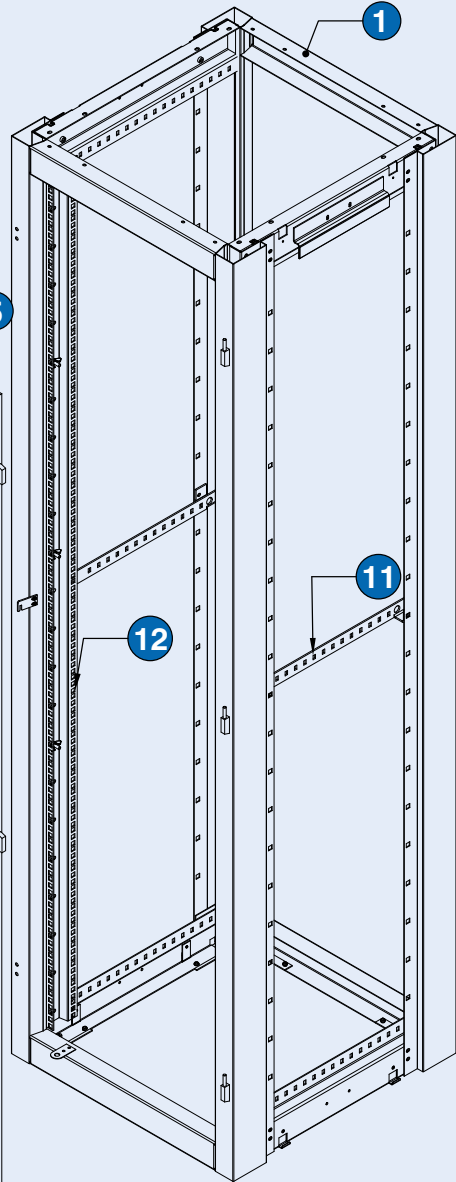
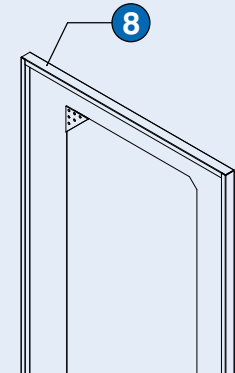
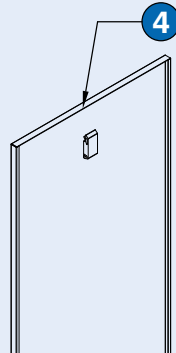
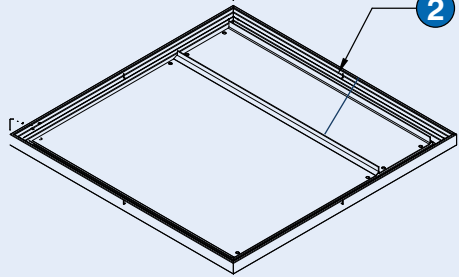
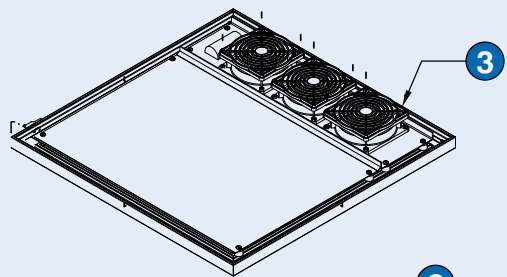
5 Glass / Perspex Door

Glass / Perspex provides a unique option for the door. The glass / perspex door can be fitted to the front or rear of the cabinet, and provides an unobstructed view of the equipment inside the

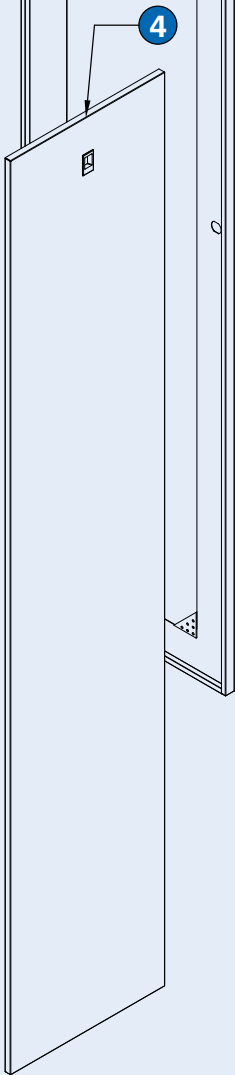
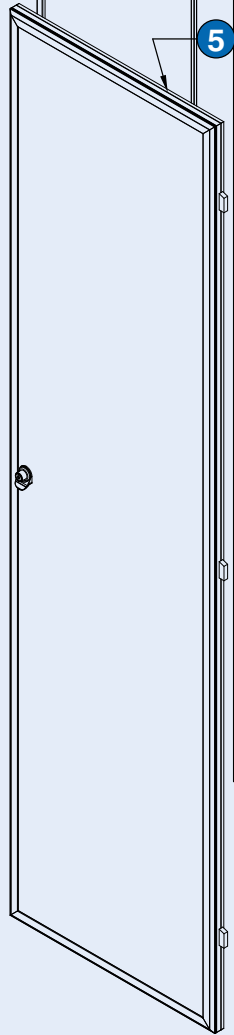
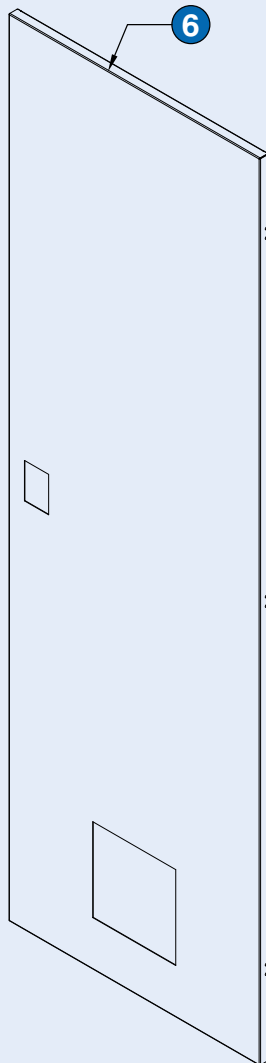
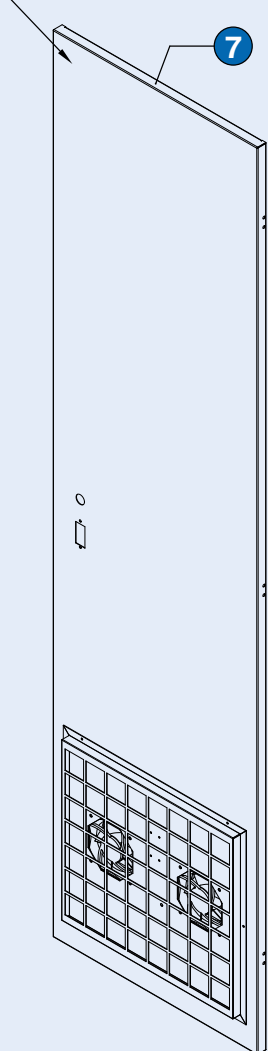
cabinet. Doors can be fitted to both front and rear of the rack if required.

Tinted Glass / Perspex provides an alternative and unique option for the door.

- 6 Steel Door - c/w 3 point system square locks and plastic vent
- 7 Steel Door - right hand with 3 point lock system, 2 fans and filter with cover
- 8 Door RHS Mesh
- 9 Standard RHS Plain Door with stiffener (front or rear or both)
- 10 Vented RHS Door
Louvre Vented or Perforated.
Additional airflow through the cabinet can be achieved with louvre vents or perforations pre-punched into the door panel.
- 11 Mid Rail x 2 per cabinet are standard
- 12 Mounting Channel x 2 per cabinet are standard



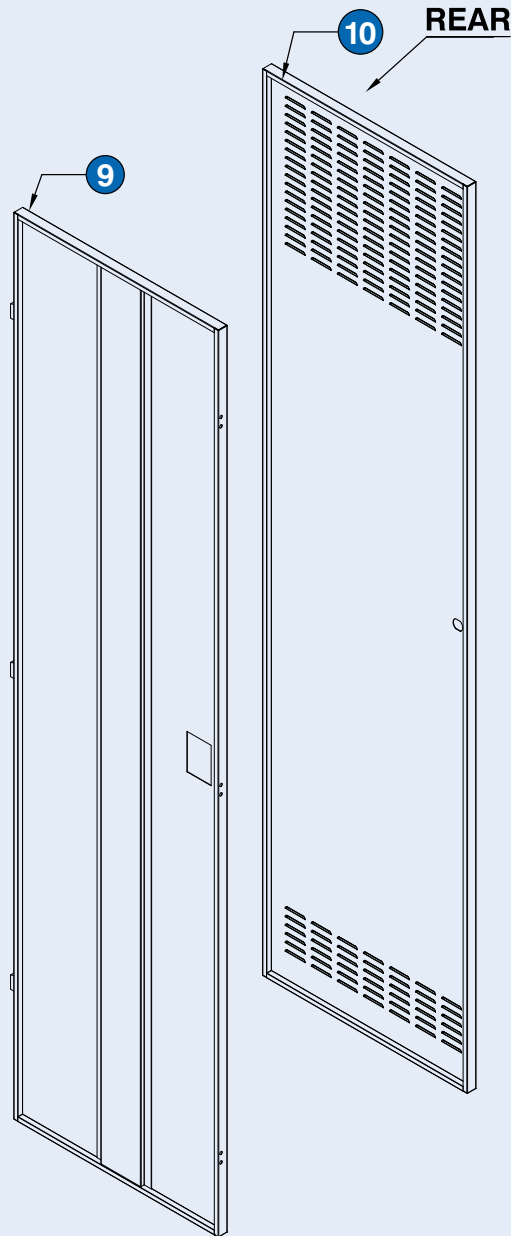
FRONT



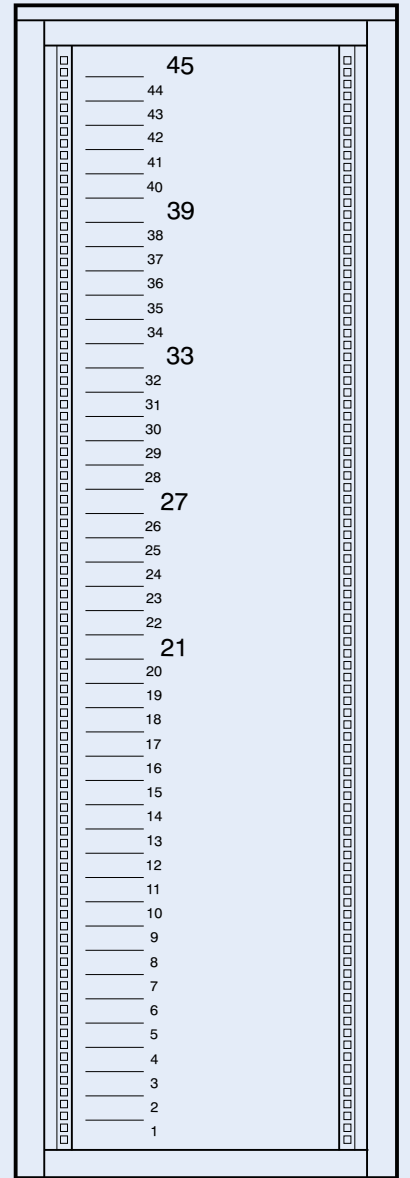
Other Cabinet Width Options

Equipment Opening
21" (535mm)
23" (585mm)
24" (610mm)
27" (685mm)
40" (1025mm)

Technical Details



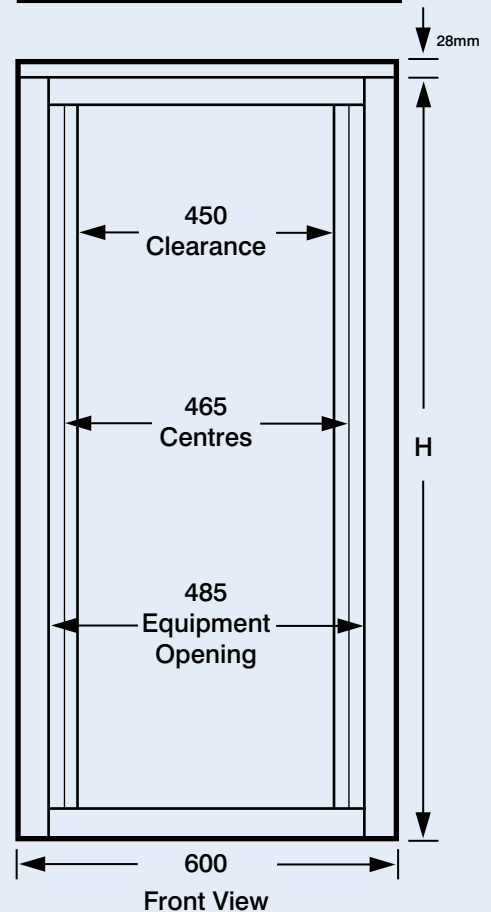
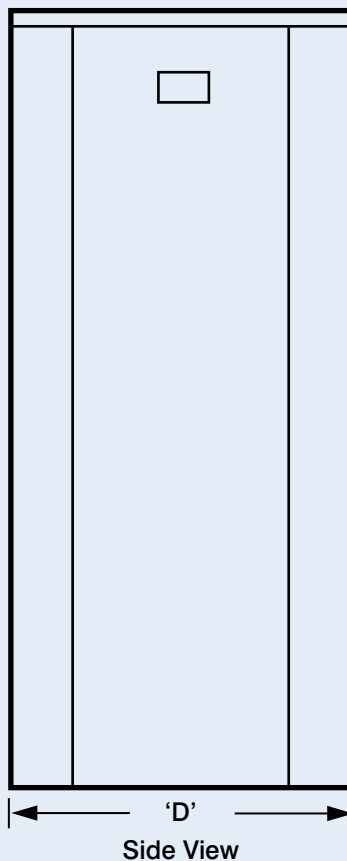
- A stylish cabinet, allowing configuration on site. If requested we can assemble all extras, such as Mid Rails, Cable Trays, Chasis Runners etc to your specifications.
- Welded door frame construction with bolted side stringers to achieve 'knockdown' status but maintain a 'fully' welded strength.
- Extruded section lift off door system fitted with steel, glass, or acrylic panels.
- Versatile top design incorporating retro-fit cable, fanned, vent or custom panels.
- Slam shut lockable, button press door latch.
- Shelf system for quick mounting that's independent of mounting rail positions.
- Fully adjustable mounting rails designed to accept the full accessory range - ours or anyone else's.
- Standard 600mm width.
- Stock colour is N22 Cloud Grey. Other colours also available.



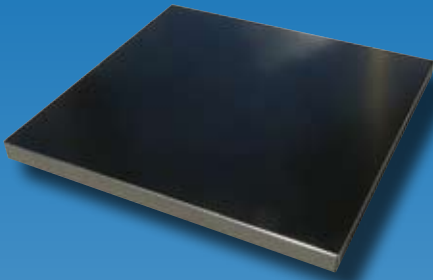
Standard 19" Cabinets

Height Rack Units	Height "H" mm	Depth "D" mm	Order Code
21	1064	600	P21-600-485
		700	P21-700-485
		800	P21-800-485
		1000	P21-1000-485
27	1331	600	P27-600-485
		700	P27-700-485
		800	P27-800-485
33	1598	600	P33-600-485
		700	P33-700-485
		800	P33-800-485
		1000	P33-1000-485
39	1864	600	P39-600-485
		700	P39-700-485
		800	P39-800-485
		1000	P39-1000-485
45	2130	600	P45-600-485
		700	P45-700-485
		800	P45-800-485
		1000	P45-1000-485

Sizes not shown are available on request. Height does not include the Top.



Accessories



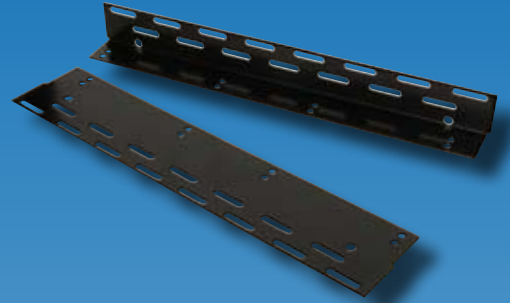
Shelves

Sliding and fixed shelves available.



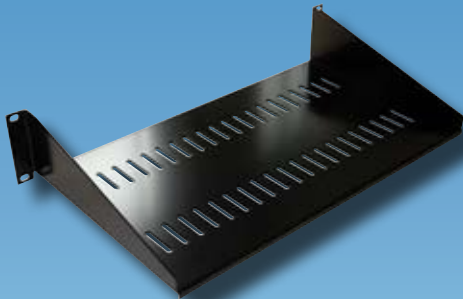
Drawer

Unique ball bearing slides allow equipment to extend out of the rack for maintenance.



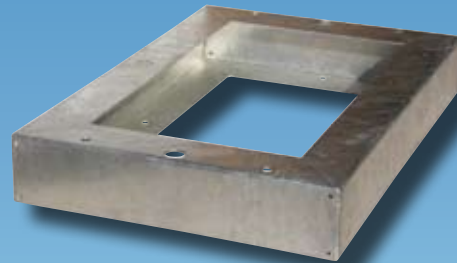
Chassis Runner

Standard and flat. Angle / flat for fixed / sliding equipment. Requires rear mounting channels for mounting.



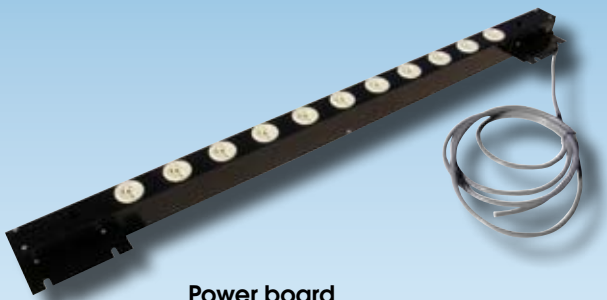
Cantilevered shelf

The Cantilever construction enables quick repositioning within the rack.



Plinth

Plinth available with wheels, for mobility.



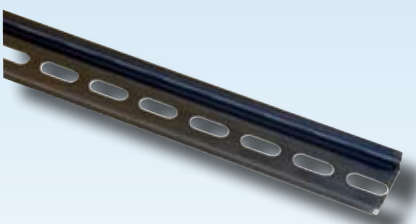
Power board

Available from one power outlet to the number of your choice.



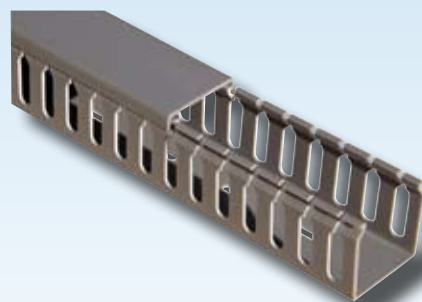
Earth Bar

Copper Bar 19mm x 3mm tapped M5 on 300mm pitch. Length to suit enclosure. Vertical or horizontal options available.



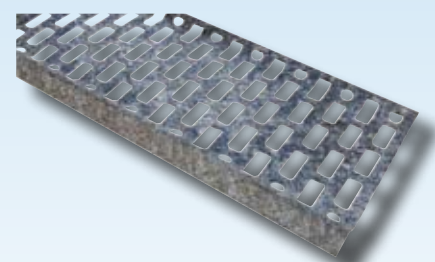
Din Rail

A slotted metal rail for the mounting of circuit breakers and control equipment.



Slotted Duct

To accept electrical cabling. Available in various sizes.



Cable Tray

Available in four sizes: 75mm wide, 100mm wide, 150mm wide or 225mm wide. Length to suit enclosure.

Other custom made products



BOVAL
ENGINEERING INCLUDING:
TECHMETAL INDUSTRIES & NERINGA FABRICATION

For all enquiries: info@bovalengineering.com.au

Tel: 4721 7721 Fax: 4721 0722

13 Coombes Drive, Penrith NSW 2750 www.bovalengineering.com.au

